

GARMIN ELOG™

Owner's Manual

© 2017 Garmin Ltd. or its subsidiaries

All rights reserved. Under the copyright laws, this manual may not be copied, in whole or in part, without the written consent of Garmin. Garmin reserves the right to change or improve its products and to make changes in the content of this manual without obligation to notify any person or organization of such changes or improvements. Go to www.garmin.com for current updates and supplemental information concerning the use of this product.

Garmin® and the Garmin logo are trademarks of Garmin Ltd. or its subsidiaries, registered in the USA and other countries. Garmin eLog™ is a trademark of Garmin Ltd. or its subsidiaries. These trademarks may not be used without the express permission of Garmin.

Android™ is a trademark of Google Inc. Apple® is a trademark of Apple Inc, registered in the U.S. and other countries. The Bluetooth® word mark and logos are owned by the Bluetooth SIG, Inc., and any use of such name by Garmin is under license.

Table of Contents

Introduction	1
Device Overview	1
Installation	1
Setting Up Your Garmin eLog Adapter	1
Daily Operation Guidelines	1
Starting a Drive	2
Garmin eLog App Overview	2
Driving in a Team	2
Changing Duty Status	2
Viewing Hours of Service	3
Recording Adverse Conditions	3
Reviewing Logs	3
Certifying Daily Logs	3
Submitting a Daily Log	3
Exporting and Saving a Record of Duty Status (RODS)	
Report	3
Recording Trailers and Shipments	3
Backing Up Data	3
Roadside Inspection	3
Required Documentation	3
Viewing Inspection Information	3
Transferring Data to an Inspector Using a USB Device	4
Transferring Data to an Inspector Using Bluetooth Wireless Technology	4
Diagnostics and Malfunctions	4
Viewing Diagnostics and Malfunctions	4
Diagnostic Definitions	4
Malfunction Definitions	5
Administrator Functions	5
Adding Driver Profiles	5
Editing a Driver Profile	5
Enabling the Yard Move Exemption	6
Troubleshooting	6
Garmin Support Center	6
Updating Device Firmware	6
Restoring Data	6
The light ring on my adapter is flashing red	6
I forgot to change my duty status	6
The odometer on my vehicle does not match the app	6
Device Information	6
Specifications	6
Device Care	6
Index	7

Introduction

WARNING

See the *Important Safety and Product Information* guide in the product box for product warnings and other important information.

Device Overview



①	Rubber cap. Lift to reveal the pairing button and USB port.
②	Pairing button. Hold to activate pairing mode.
③	USB port. Transfers files to a USB storage device.
④	Light ring. Illuminates light blue when the device receives power. Flashes dark blue when the device is in pairing mode. Illuminates dark blue when connected using Bluetooth® wireless technology. Illuminates green when a USB transfer is ready. Illuminates red and flashes when an error is detected.
⑤	Lock ring. Secures the device to the vehicle diagnostic port or adapter cable.

Installation

WARNING

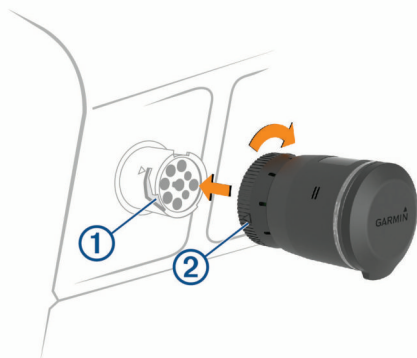
When installing the device in a vehicle, install the device securely so it does not interfere with the vehicle operating controls, such as the foot pedals, or the driver's feet. Interference with the vehicle operating controls or feet can result in a collision, which could result in injury or death.

The Garmin eLog device connects to the diagnostic port on your vehicle. The location of the diagnostic port varies in different vehicles. See your vehicle owner's manual for more information.

Installing the Device in a J1939 Port

- 1 Turn off your vehicle.
- 2 Connect the device to the 9-pin diagnostic port ① on your vehicle.

NOTE: The arrow on the lock ring ② must align with the channel on the vehicle diagnostic port.

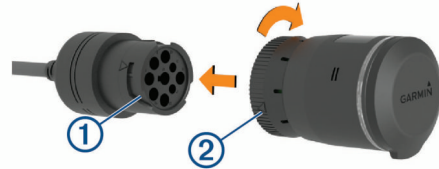


- 3 Turn the lock ring clockwise until it locks into the diagnostic port.

Installing the Device in a J1708 Port

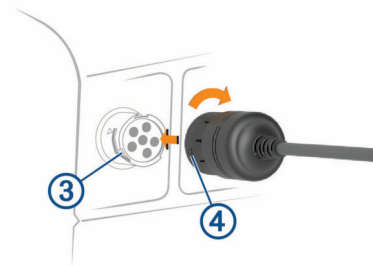
- 1 Turn off your vehicle.
- 2 Connect the device to the 9-pin side of the adapter cable ① included with your device.

NOTE: The arrow on the lock ring ② must align with the channel on the adapter cable.



- 3 Turn the device lock ring clockwise until it locks into the adapter cable.
- 4 Connect the 6-pin side of the adapter cable to the J1708 port ③ on your vehicle.

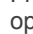

NOTE: The arrow on the adapter lock ring ④ must align with the channel on the J1708 port.



- 5 Turn the lock ring clockwise until it locks into the vehicle port.

Setting Up Your Garmin eLog Adapter

You must set up and pair your Garmin eLog adapter with the Garmin eLog app in order to be in compliance with FMCSA ELD regulations.

- 1 Select an option:
 - From the app store on your mobile device, install and open the  Garmin eLog app.
 - On a compatible dēzl™ device with Android™, open the  Garmin eLog app.
- 2 Follow the instructions in the app to set up and configure the Garmin eLog system, administrator account, and driver profiles.

NOTICE

The administrator account is critical for some app functions. Choose an administrator password you can remember, and do not lose the password. The administrator password cannot be recovered without clearing all app data, which causes all recorded Garmin eLog data to be deleted.

NOTE: Until you complete the setup process, the Garmin eLog device has limited functionality and is not compliant with FMCSA ELD regulations.

Daily Operation Guidelines

The following points are guidelines to follow when using the Garmin eLog system. Your motor carrier may have different operation requirements. Follow your motor carrier's recommendations for daily operation.

- Verify the device hosting the Garmin eLog app is securely mounted in the vehicle and its screen is visible from a normal seated position.

- Verify Bluetooth wireless technology and location services are enabled on your device at all times while using the Garmin eLog adapter.
- Verify the Garmin eLog app is running and the Garmin eLog adapter is secured to the vehicle diagnostic port before starting the vehicle ([Installation, page 1](#)).
- Log in to the Garmin eLog app at the start of each day.
- Review and claim all logs recorded for an unidentified driver, if applicable.
- At the end of each work day, log out of the Garmin eLog app after turning off the engine.
- Certify your records, and submit them to your motor carrier at the end of each day ([Certifying Daily Logs, page 3](#)).

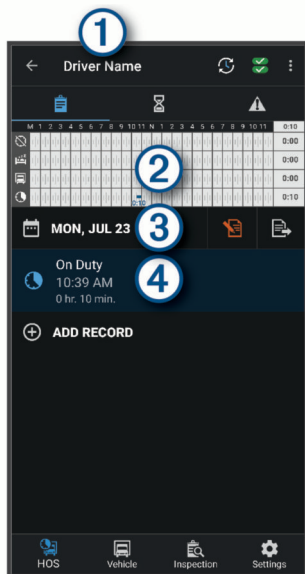
Starting a Drive

Each time you drive your vehicle, you should complete these actions to ensure your hours of service information is recorded correctly.

- 1 Verify the Garmin eLog adapter is secured to the vehicle diagnostic port.
- 2 Open the Garmin eLog app, and log in as the driver.
- 3 Start your vehicle.
- 4 Before you start driving, change your duty status in the Garmin eLog app.

The Garmin eLog adapter syncs with the Garmin eLog app and records ELD Records of Duty Service (RODS) automatically.

Garmin eLog App Overview



①	The name of the active driver.
⌚	Select to change duty status.
📋	Diagnostic and malfunction indicator. Select to view detailed information about diagnostic or malfunction alerts (Viewing Diagnostics and Malfunctions, page 4).
⋮	Select to record adverse conditions, create a Records of Duty Status (RODS) report, or log out.
📊	Select to view a chart of your hours of service information.
🕒	Select to view a summary of currently available on-duty hours.
⚠️	Select to review log information.
📅	Select to view a full-screen chart of your service hours.
📅	Select to review logs for a different day.
📋	Select to certify your logs for the selected day.

📋	Select to submit a 24-hour log to your motor carrier.
④	A record of your status for the recorded time period. Select to edit status information and adjust the time.
🕒	Select to view hours of service information.
📋	Select to manage trailer and shipment information or to create a driver vehicle inspection report.
🔍	Select to view inspection reports and transfer reports to a roadside inspector.
⚙️	Select to view additional system settings.

Data Retention Notice

NOTICE

Uninstalling the Garmin eLog app will cause all retained ELD data to be deleted from the mobile device. It is the responsibility of the driver and/or motor carrier to ensure ELD records are retained as required by applicable regulations.

Driving in a Team

If you are driving in a team, you can switch between active drivers at any time. Each driver must log in to the Garmin eLog app before they can be set as the active driver.



From the Garmin eLog app, select the icon ① next to the user who should be listed as the active driver.

Changing Duty Status

For the most accurate records, you must change your duty status in the Garmin eLog app every time you change your driving status, such as when you start driving, take a break, switch drivers, or change the type of driving you are doing. The Garmin eLog adapter automatically switches to driving status when the vehicle's diagnostic port reports a speed greater than or equal to five miles per hour. The vehicle is stopped when the diagnostic port reports a speed of zero miles per hour.

NOTE: The vehicle must be stopped to change duty status. You cannot manually change duty status while you are driving.

- 1 From the Garmin eLog app, select ⌚.
- 2 Select an option:

NOTE: The Personal Conveyance and Yard Moves options are available only if the administrator has enabled them for your driver profile ([Editing a Driver Profile, page 5](#)).

- If you are on duty, select **On Duty**.
- If you are off duty, select **Off Duty**.
- If you are on duty and driving, select **Driving**.
- If you are moving to the sleeper berth, select **Sleeper Berth**.

- If you are using the vehicle for personal conveyance, select **Personal Conveyance**.
- If you are moving the vehicle within the yard, select **Yard Moves**.

Editing a Duty Status Record

You can update individual duty status entries to make corrections or updates to your duty status history as allowed by FMCSA regulations. This can be useful if you forget to change your duty status.

- 1 From the Garmin eLog app, select the duty status record for the affected time period.
- 2 Select **Duty Status**.
- 3 Select the correct duty status for the time period.
- 4 If necessary, update the start and end times for the duty status entry.
- 5 If necessary, enter the location where this duty status was active.
- 6 Enter an annotation describing the reason for the change.
- 7 Select **Save**.

Viewing Hours of Service

- 1 From the Garmin eLog app, select **HOS**.
- 2 Select an option:
 - To view a chart of your hours of service information, select .

TIP: You can select the chart to view a larger image of your information.
 - To view a list of remaining drive hours, select .

Recording Adverse Conditions

If you require a time extension because of adverse conditions, you can add a two-hour extension to your hours for the day.

From the Garmin eLog app, select > **Record Adverse Conditions** > **Yes**.

Reviewing Logs

The Garmin eLog app keeps track of logs that may require review, including logs that have been edited or logs that exist for an unidentified driver. When a driver logs in, the app prompts them to review logs that contain an unidentified driver, if any are available. Drivers are responsible for reviewing and claiming logs, if applicable.

- 1 Select **HOS** > .
- 2 Select a log.
- 3 Select an option:
 - If the log applies to you and your hours of service, select **Accept**.
 - If the log does not apply to you, select **Decline**.

Certifying Daily Logs

After you are finished driving for the day, you should certify your daily log. If you update your duty status after certifying it, you must certify it again.

From the Garmin eLog app, select > **Agree**.

Submitting a Daily Log

You can submit a daily log to your motor carrier.

- 1 From the Garmin eLog app, select .
- 2 Select an option to share your exported log.

Exporting and Saving a Record of Duty Status (RODS) Report

You can create a RODS report so you or your motor carrier can open your records of duty status outside of the Garmin eLog app.

- 1 From the Garmin eLog app, select > **Create RODS Report**.
- 2 If necessary, select **Create Additional Graph Grid Report** to include a graph grid in your RODS report.
- 3 Select an option:
 - To save the report to the internal storage of the device running the Garmin eLog app, select **Save Report**.
 - To export the report to email, select **Export Report**.

Recording Trailers and Shipments

You can use the Garmin eLog app to keep records of trailers and shipments.

- 1 Select **Vehicle** > .
- 2 Select an option:
 - To add a trailer, select **Add Trailer**.
 - To add a shipment, select **Add Shipment**.
- 3 Enter the trailer number or shipping document number.

Backing Up Data

You can back up your recorded data to a USB storage device. You should back up regularly to help prevent data loss. This is also useful when you need to transfer data to another device.

- 1 From the Garmin eLog app, select **Settings** > **Back Up Data**.
- 2 Insert a USB storage device into the USB port on the Garmin eLog adapter.

The light ring on the adapter glows green and plays a tone when it is ready to back up data.
- 3 Select **Back Up Data**.

Roadside Inspection

Required Documentation

The following documentation must be within the vehicle when using the Garmin eLog adapter.

Garmin eLog Owner's Manual: The owner's manual is included as part of the Garmin eLog app. You can view the owner's manual by selecting **Settings** > **View Online Help**.

Garmin eLog Driver Reference Guide: You should keep a printed copy of the driver reference guide in your vehicle. The driver reference guide provides a list of data transfer options and instructions, malfunction reporting requirements, and record keeping procedures for the Garmin eLog adapter. To view or print the most up-to-date driver reference guide, go to garmin.com/manuals/elog.

Records of Duty Status (RODS) Sheets: The driver must possess a supply of blank paper RODS graph-grids sufficient to record duty status and other related information for a minimum of eight days.

Viewing Inspection Information

An authorized safety official may ask to view all information recorded by the Garmin eLog system for the current 24-hour period and any of the previous seven consecutive days. You can view this information on the Garmin eLog app at any time.

From the Garmin eLog app, select **Inspection**.

Transferring Data to an Inspector Using a USB Device


You can transfer data to a USB mass storage device to provide it to an authorized safety official. The Garmin eLog adapter supports USB mass storage devices formatted using the FAT32 file system.

- 1 From the Garmin eLog app, select **Inspection**.
- 2 Select an option:
 - For a device with Android, select  > **Yes**.
 - For an Apple® device, select **Send Report** > **Yes**.
- 3 If necessary, enter an annotation.
- 4 Select **USB**.
- 5 Connect a USB mass storage device to the USB port on your Garmin eLog adapter.
The adapter glows green when it is ready to send the inspection report.
- 6 Enter your password.
- 7 Select **Send to USB Device**.
The Garmin eLog app notifies you when the transfer is complete.
- 8 Remove the USB mass storage device from the adapter.

Transferring Data to an Inspector Using Bluetooth Wireless Technology

The inspector's device must support the Bluetooth Personal Area Networking (PAN) profile and must be able to connect to FMCSA Web Services to complete transfers using Bluetooth wireless technology. Ensure that Bluetooth wireless technology and a Wi-Fi hotspot are enabled on the inspector's mobile device.

The Garmin eLog device uses the inspector's mobile device as a network access point to send inspection information to FMCSA web services.

- 1 From the Garmin eLog app, select **Inspection**.
- 2 Select an option:
 - For a device with Android, select  > **Yes**.
 - For an Apple device, select **Send Report** > **Yes**.
- 3 If necessary, enter an annotation.
- 4 Select **Bluetooth**.
- 5 Select **Enable Pairing Mode**.
- 6 Follow the on-screen instructions in the app to pair the Garmin eLog adapter with the inspector's mobile device.

The inspection report transfers automatically after the pairing process is complete.

Diagnostics and Malfunctions

The Garmin eLog app records malfunctions and diagnostic events when the app detects critical functions that do not conform to Federal Motor Carrier Safety Administration (FMCSA) specifications. When a malfunction is detected, the driver and motor carrier are subject to responsibilities as directed by FMCSA guidelines.

Driver Responsibilities

- The driver must note the malfunction of the ELD and provide written notice of the malfunction to the motor carrier within 24 hours.
- The driver must reconstruct the Record of Duty Status (RODS) for the current 24-hour period and the previous 7 consecutive days, and record the records of duty status on graph-grid paper logs that comply with 49 CFR 395.8, unless

the driver already has the records or retrieves them from the ELD.





- The driver must continue to manually prepare RODS in accordance with 49 CFR 395.8 until the ELD is serviced and returned to a compliant status.

Motor Carrier Responsibilities

- The motor carrier must correct, repair, replace, or service the malfunctioning ELD within eight days of discovering the condition or a driver's notification to the motor carrier, whichever occurs first.
- The motor carrier must require the driver to maintain a paper RODS record until the ELD is back in service.

Viewing Diagnostics and Malfunctions

If the Garmin eLog adapter detects a diagnostic event or malfunction, an alert and an indicator appear in the app.

	No diagnostic events or malfunctions are detected.
	A diagnostic event was detected.
	A malfunction was detected.
	Diagnostic events and malfunctions were detected.

You can view information about these alerts at any time. This can be useful for correcting errors or adjusting driver information.

Select the diagnostic or malfunction indicator.

The app displays information about the diagnostic or malfunction alert and provides recommendations for how to correct it.

Diagnostic Definitions

Power Data Diagnostic Event: The adapter did not receive power, or was not fully functional, for a period of time.

- 1 Check the vehicle diagnostic port connections.
- 2 Verify the adapter is firmly plugged into the vehicle diagnostic port.
- 3 Review all affected driver logs for missing or incorrect data.

Engine Synchronization Data Diagnostic Event: The adapter failed to synchronize with the vehicle engine computer to record required engine data for driver logs.

- 1 Check the vehicle diagnostic port connections.
- 2 Verify the adapter is firmly plugged into the vehicle diagnostic port.
- 3 Review all affected driver logs for missing or incorrect data.

Missing Required Data Elements Data Diagnostic Event: The Garmin eLog system failed to obtain one or more required data elements when recording driver logs.

- 1 Check the vehicle diagnostic port connections.
- 2 Verify the adapter is firmly plugged into the vehicle diagnostic port.
- 3 Check the Bluetooth settings on the device running the Garmin eLog app, and verify the device and the adapter are connected.
- 4 Check the GPS settings on the device running the Garmin eLog app, and verify the device settings allow location positions to be shared with the Garmin eLog app.
- 5 Review all affected driver logs for missing or incorrect data.

Data Transfer Data Diagnostic Event: A failure occurred with the method for transferring roadside inspection reports.

Perform the following actions:

- 1 Check the Bluetooth settings on the device running the Garmin eLog app, and verify the device and the adapter are connected.
- 2 Verify all USB storage devices used to transfer roadside inspection reports are operating correctly.
- 3 If you have not performed a data backup within the previous seven days, back up your recorded Garmin eLog data to a USB storage device.

Unidentified Driving Records Data Diagnostic Event

Unidentified Driving Records Data Diagnostic Event: At least 30 minutes of unidentified driving was recorded within the current 24 hour period, and over the previous 7 days.

- Drivers: Review and claim the unidentified driving time.
- Administrator: Review and assign the unidentified driving time to the respective drivers.

Malfunction Definitions

Power Compliance Malfunction: The adapter did not receive power, or was not fully functional, for a period of time. At least 30 minutes of driving time may not have been correctly recorded across all drivers over the past 24 hours.

- 1 Check the vehicle diagnostic port connections.
- 2 Verify the adapter is firmly plugged into the vehicle diagnostic port.
- 3 Review all affected driver logs for missing or incorrect data.

Engine Synchronization Compliance Malfunction: The adapter failed to synchronize with the vehicle engine computer to record required engine data for driver logs. At least 30 minutes of inaccurate data may have been recorded across all drivers over the past 24 hours.

- 1 Check the vehicle diagnostic port connections.
- 2 Verify the adapter is firmly plugged into the vehicle diagnostic port.
- 3 Review all affected driver logs for missing or incorrect data.

Timing Compliance Malfunction: The Garmin eLog system failed to accurately verify the calendar date or time of day required for driver logs.

- 1 Verify the adapter is firmly plugged into the vehicle diagnostic port.
- 2 Check the Bluetooth settings on the device running the Garmin eLog app, and verify the device and the adapter are connected.
- 3 Check the date and time settings on the device running the Garmin eLog app.
- 4 Review all affected driver logs for missing or incorrect data.

Positioning Compliance Malfunction: The Garmin eLog system failed to acquire valid location positions required for driver logs. At least 60 minutes of inaccurate data may have been recorded across all drivers over the past 24 hours.

- 1 Verify the Garmin eLog app is running and a driver is logged in when driving the vehicle.
- 2 Check the Bluetooth settings on the device running the Garmin eLog app, and verify the device and the adapter are connected.
- 3 Check the GPS settings on the device running the Garmin eLog app, and verify the device settings allow location positions to be shared with the Garmin eLog app.
- 4 Review all affected driver logs for missing or incorrect data.

Data Recording Compliance Malfunction: The Garmin eLog system has reached the maximum storage capacity for driver logs and cannot store or retrieve more logs.

- 1 Create a RODS report for each driver for record keeping (*Exporting and Saving a Record of Duty Status (RODS) Report*, page 3).
- 2 Log in as an administrator.
- 3 Back up the system data.
- 4 Remove unneeded files from the storage of the device running the Garmin eLog app.

Data Transfer Compliance Malfunction: Multiple failures occurred with the method for transferring roadside inspection reports.

Perform the following actions:

- 1 Check the Bluetooth settings on the device running the Garmin eLog app, and verify the device and the adapter are connected.
- 2 Verify all USB storage devices used to transfer roadside inspection reports are operating correctly and are formatted using the FAT32 file system.
- 3 If you have not performed a data backup within the previous seven days, back up your recorded Garmin eLog data to a USB storage device.

Adapter Firmware Malfunction: A serious error occurred attempting to update the adapter firmware. Contact Garmin® customer support for further help.

Outdated adapter firmware may not maintain compliance. Garmin recommends keeping paper logs until the adapter firmware is successfully updated.

Administrator Functions

NOTICE

The administrator account is critical for some app functions. Choose an administrator password you can remember, and do not lose the password. The administrator password cannot be recovered without clearing all app data, which causes all recorded Garmin eLog data to be deleted.

You must use the administrator account to perform some Garmin eLog app functions, including adding driver profiles, editing driver profiles, and resetting driver passwords. The administrator account and password are created during the initial Garmin eLog app setup. If the app is administered by a company, drivers may not have access to the administrator functions.

Adding Driver Profiles

You must log in as an administrator to add driver profiles.

- 1 From the Garmin eLog app, select **Add Driver**.
- 2 Enter the administrator password.
- 3 Enter the driver and motor carrier information.
- 4 If the driver has an exempt status, select **Exempt Driver**.
- 5 If the driver is allowed to use the vehicle for personal conveyance, select **Allow Personal Conveyance**.
- 6 If the driver is allowed to make yard moves, select **Allow Yard Moves**.
- 7 Select **Save**.

The first time the driver logs into the new profile, the app prompts the driver to enter their driver license number and create a password.

Editing a Driver Profile

An administrator can edit driver profiles to change driver privileges, reset profile passwords, or deactivate profiles.

NOTE: The administrator can edit basic driver information in the driver profile, but the Garmin eLog app does not support editing duty status records from the administrator account. To correct a duty status record, the driver must log in to the driver profile and edit the record ([Editing a Duty Status Record, page 3](#)).

- 1 Log in to an administrator account.
- 2 Select a driver profile.
- 3 Select **:** > **Edit Profile**.
- 4 Select an option:
 - To edit driver information, select a field to update it.
 - To reset the profile password, select **Reset Password**.
 - To deactivate the profile, select **Deactivate Profile**.

Enabling the Yard Move Exemption

An administrator can enable or disable an exemption rule for using the Yard Move duty status. When enabled, the setting allows drivers to maintain a Yard Move status when the vehicle has been turned off and restarted. Drivers are automatically moved to Driving status when the vehicle exceeds 20 mph.

- 1 Log in to an administrator account.
- 2 Select **Settings** > **Yard Move Exemption**.

Troubleshooting

Garmin Support Center

Go to support.garmin.com for help and information, such as product manuals, frequently asked questions, videos, and customer support.

Updating Device Firmware

NOTICE

You must keep your device firmware updated to maintain compliance with FMCSA regulations.

The Garmin eLog app notifies you when firmware updates for your Garmin eLog adapter are available.


Park the vehicle in a safe location with the engine running until the update is complete.

NOTE: Do not turn off the engine during the update process.

Restoring Data

You can restore backed up data from a USB storage device. This can be useful if you need to reinstall the Garmin eLog app, or if you need to install the app on a different device.

NOTE: You can restore backed up data only while you are setting up the Garmin eLog app.

- 1 Open the  Garmin eLog app to start the setup process.
- 2 Follow the on-screen instructions to install the Garmin eLog adapter in the vehicle diagnostic port ([Installation, page 1](#)) and complete the pairing process.
- 3 Select **Restore from Backup**.
- 4 Insert a USB storage device containing backup files into the USB port on the Garmin eLog adapter.

The light ring on the adapter glows green and plays a tone when it is ready to restore data.
- 5 Select a backup file.
- 6 Select **Restore**.

The light ring on my adapter is flashing red

The light ring on the Garmin eLog adapter flashes red when the vehicle is moving and a driver is not logged into the Garmin

eLog app, or when an incompatible USB mass storage device is connected.

- Verify Bluetooth wireless technology is enabled on your mobile device.
- Verify location services are enabled on your mobile device.
- Log into the Garmin eLog app when the vehicle is stopped.
- Verify your USB mass storage device is functioning correctly and that it is using the FAT32 file system.

I forgot to change my duty status

You can update individual duty status entries ([Editing a Duty Status Record, page 3](#)).

The odometer on my vehicle does not match the app

The Garmin eLog adapter reads the vehicle mileage directly from the Electronic Control Module (ECM) on the vehicle. Occasionally, variations in the vehicle due to repairs, upgrades, or modifications can cause differences between the instrument cluster and the ECM.

The following items are possible causes of variation.

- The circumference of the tires was changed.
- There are differences between the types of sensors used in the engine ECM and instrument cluster.
- The engine ECM was reprogrammed or replaced.
- The instrument cluster was reprogrammed or replaced.
- Possible firmware defects exist in the instrument cluster or the engine ECM.
- The vehicle manufacturer or supplier accumulated distance while testing vehicle components.

Device Information

Specifications

Operating temperature range	From -20° to 55°C (from -4° to 131°F)
Radio frequency/protocol	2.4 GHz Bluetooth
Input voltage	8-40 V, 1 A DC

Device Care

NOTICE

Avoid extreme shock and harsh treatment, because it can degrade the life of the product.

Do not store the device where prolonged exposure to extreme temperatures can occur, because it can cause permanent damage.

Do not use a sharp or abrasive object to clean the device.

Avoid chemical cleaners, abrasive cleaners, solvents, and insect repellents that can damage plastic components and finishes.

Index

A

adverse conditions [3](#)

C

cleaning the device [6](#)

D

data

backing up [3](#)

restoring [6](#)

diagnostics [4](#)

drivers [2](#)

adding [5](#)

editing [5](#)

driving logs [3](#)

duty status [3](#)

F

files, transferring [4](#)

H

hours of service [2, 3](#)

driving logs [3, 4](#)

duty status [3](#)

inspection [3](#)

I

initial setup [1](#)

installation [1](#)

installing [1](#)

M

malfunctions [4, 5](#)

O

operation guidelines [1](#)

R

reports, mileage [6](#)

S

software, updating [6](#)

specifications [6](#)

starting a drive [2](#)

status, duty [2](#)

T

troubleshooting [6](#)

truck

drivers [5, 6](#)

profiles [5, 6](#)

shipments [3](#)

trailer [3](#)

U

USB

hours of service, driving logs [4](#)

transferring files [4](#)